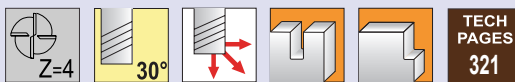


$d1$	+0.001" - .002" (+.000 - .050mm)
$d2$	h6
r	+0.001" - .001" (+.025 - .025mm)



Recommended for graphite, fiber-reinforced plastics, carbon fiber

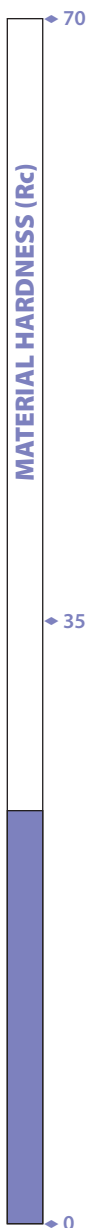
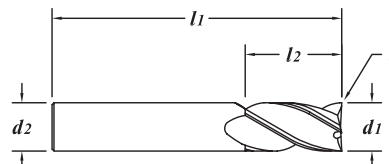
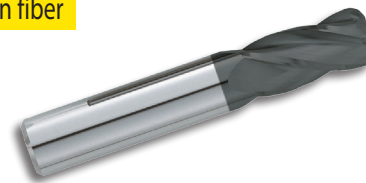
Corner Radius

Diamond Coating

Solid grade C-2 carbide end mill - center cutting

Crystalline diamond coating

For stronger corners and part radius



EDP#	$d1$ † Diameter		$d2$ Shank Diameter	$l1$ Overall Length	$l2$ Flute Length	r Corner Radius	LIST PRICE	
	Decimal	Metric						
24118	.1181	3.000	3.0	38	12	0.50	90.99	
80018	.1250	1/8"	3.175	1/8"	1-1/2"	1/2"	.015"	86.44
80028	.1250	1/8"	3.175	1/8"	1-1/2"	1/2"	.020"	86.44
24148	.1575	4.000	4.0	50	14	0.30	131.49	
24158	.1575	4.000	4.0	50	14	0.50	131.49	
80058	.1875	3/16"	4.763	3/16"	2"	5/8"	.015"	124.92
80068	.1875	3/16"	4.763	3/16"	2"	5/8"	.020"	124.92
24178	.2362	6.000	6.0	65	20	0.50	140.30	
24208	.2362	6.000	6.0	65	20	1.50	140.30	
80108	.2500	1/4"	6.350	1/4"	2-1/2"	3/4"	.015"	133.30
80118	.2500	1/4"	6.350	1/4"	2-1/2"	3/4"	.020"	133.30
80128	.2500	1/4"	6.350	1/4"	2-1/2"	3/4"	.030"	133.30
24248	.3150	8.000	8.0	65	20	1.00	175.96	
80248	.3750	3/8"	9.525	3/8"	2-1/2"	7/8"	.020"	167.65
80258	.3750	3/8"	9.525	3/8"	2-1/2"	7/8"	.030"	167.65
24318	.3937	10.000	10.0	70	25	1.00	195.45	
24378	.4724	12.000	12.0	75	25	0.50	214.92	
24398	.4724	12.000	12.0	75	25	1.00	214.92	
80328	.5000	1/2"	12.700	1/2"	3"	1"	.030"	204.17
80348	.5000	1/2"	12.700	1/2"	3"	1"	.060"	204.17