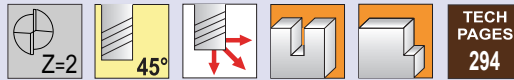


TOLERANCES

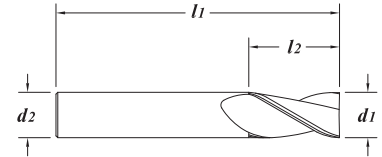
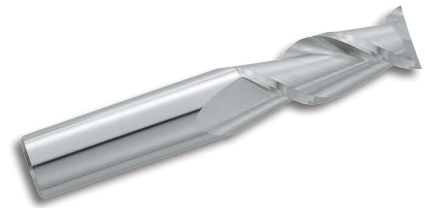
$d1$	+0.000" -0.001" (+0.000 -0.025mm)
$d2$	h6



Recommended for aluminum and titanium

Square End

- Solid submicron grain carbide end mill - center cutting
- High performance machining
- Rigid work holding, machine stability and part integrity are critical!
- Excellent choice for slotting
- Polished cylindrical O.D. margin reduces chatter
- Sharp corners (Can be modified with a corner radius)
- Designed for spindles between 3,000-8,000 RPM, 1% diameter for chip load



EDP#	$d1$ † Diameter		$d2$ Shank Diameter	$l1$ Overall Length	$l2$ Flute Length	LIST PRICE	
	Decimal	Metric					
08910	.1181	3.000	3.0	38	8	11.46	
08920	.1181	3.000	3.0	50	12	13.81	
85160	.1250	1/8"	3.175	1/8"	1-1/2"	10.76	
85170	.1250	1/8"	3.175	1/8"	2"	12.96	
08950	.1575	4.000	6.0	50	8	18.63	
08960	.1575	4.000	6.0	50	12	18.63	
85180	.1875	3/16"	4.763	3/16"	2"	5/16"	13.43
85190	.1875	3/16"	4.763	3/16"	2"	9/16"	13.43
08990	.1969	5.000	6.0	50	10	17.54	
09000	.1969	5.000	6.0	65	15	19.50	
09010	.2362	6.000	6.0	50	12	14.93	
09020	.2362	6.000	6.0	65	25	16.04	
09030	.2362	6.000	6.0	100	50	29.08	
85200	.2500	1/4"	6.350	1/4"	2"	1/2"	14.15
85220	.2500	1/4"	6.350	1/4"	2-1/2"	1"	15.29
85240	.2500	1/4"	6.350	1/4"	4"	2"	27.62
85300	.3125	5/16"	7.938	5/16"	3"	1-1/8"	32.29
09240	.3150	8.000	8.0	65	20	22.52	
09040	.3150	8.000	8.0	75	30	34.02	
09050	.3150	8.000	8.0	100	50	37.94	
85400	.3750	3/8"	9.525	3/8"	2"	5/8"	23.90
85420	.3750	3/8"	9.525	3/8"	2-1/2"	1"	26.71
85440	.3750	3/8"	9.525	3/8"	4"	2"	39.90
09060	.3937	10.000	10.0	50	16	27.82	
09070	.3937	10.000	10.0	70	25	32.51	
09080	.3937	10.000	10.0	100	50	50.85	
09090	.4724	12.000	12.0	65	20	41.55	
09100	.4724	12.000	12.0	75	32	44.93	
09110	.4724	12.000	12.0	100	50	61.89	
85500	.5000	1/2"	12.700	1/2"	2-1/2"	3/4"	39.24
85520	.5000	1/2"	12.700	1/2"	3"	1-1/4"	42.78
85540	.5000	1/2"	12.700	1/2"	4"	2"	58.39
85600	.6250	5/8"	15.875	5/8"	3-1/2"	1-5/8"	82.50
85620	.6250	5/8"	15.875	5/8"	6"	3"	120.36
09120	.6299	16.000	16.0	88	40	86.62	
09130	.6299	16.000	16.0	150	75	120.36	
09140	.7087	18.000	18.0	100	45	127.03	
85700	.7500	3/4"	19.050	3/4"	4"	1-3/4"	120.97
85720	.7500	3/4"	19.050	3/4"	6"	3"	191.73
09350	.7874	20.000	20.0	100	38	161.49	
09150	.7874	20.000	20.0	150	75	201.98	
09160	.9843	25.000	25.0	100	45	187.61	
09170	.9843	25.000	25.0	150	75	311.24	
85800	1.000	1"	25.400	1"	4"	1-3/4"	180.94
85820	1.000	1"	25.400	1"	6"	3"	325.96

